



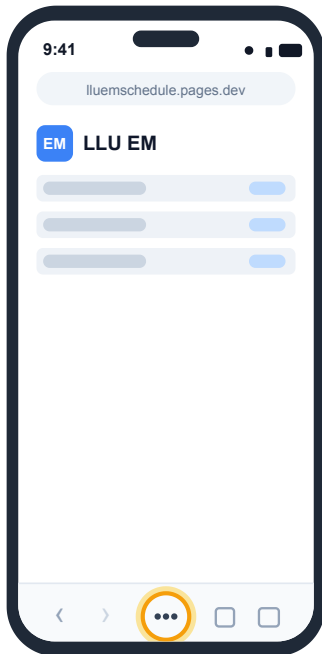
Install the LLU EM Schedule App

Add it to your home screen so it opens like a real app — with alerts & full-screen view.

iPhone & iPad

On iPhone/iPad you must use **Safari** (Chrome on iOS can't install apps). It takes about 20 seconds.

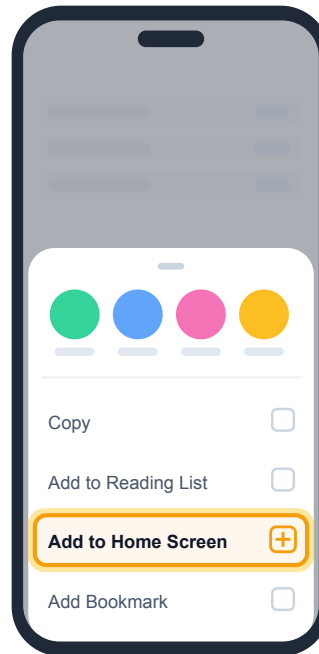
OPEN THIS LINK lluemschedule.pages.dev



1

Open in Safari, then tap

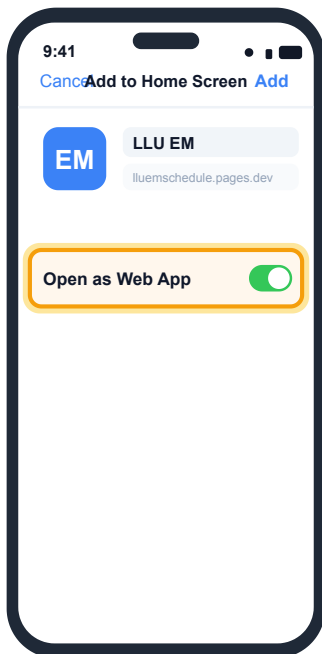
Open the link above in **Safari**. When the schedule loads, tap the (three dots) in the toolbar — this pops up the **Share button**



2

Tap “Add to Home Screen”

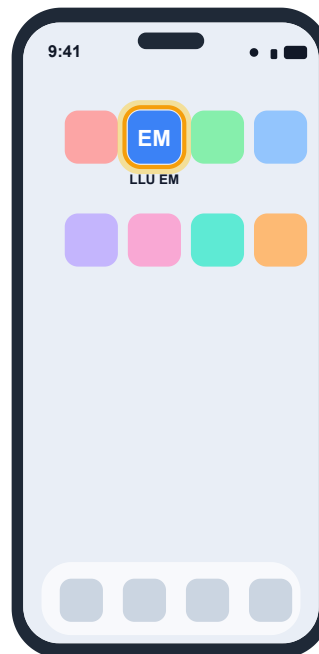
In the menu that pops up, scroll down and tap **Add to Home Screen**.



3

Turn on “Open as Web App”

Make sure **Open as Web App** is switched **ON** — this makes it open full-screen like a real app instead of in Safari.



4

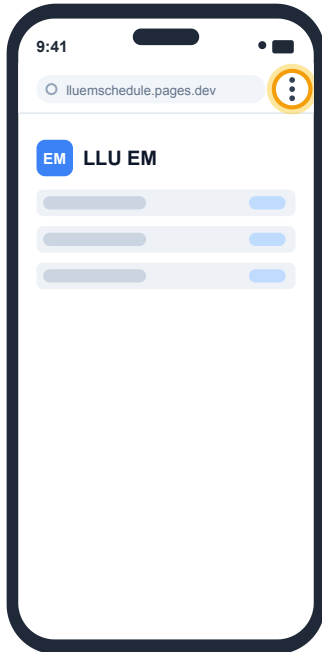
Tap “Add”, then open it

Tap **Add** in the top-right. The **LLU EM** icon is now your home screen — tap it to open and sign in once.

Must use Safari. If you opened the link in Chrome or from inside another app (like a text message preview), tap → **Open in Safari** first, then follow the steps above.

On Android, use **Chrome**. You can often install with a single tap.

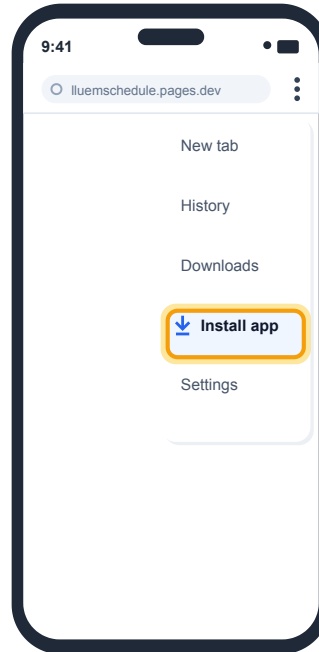
OPEN THIS LINK lluemschedule.pages.dev



1

Open in Chrome

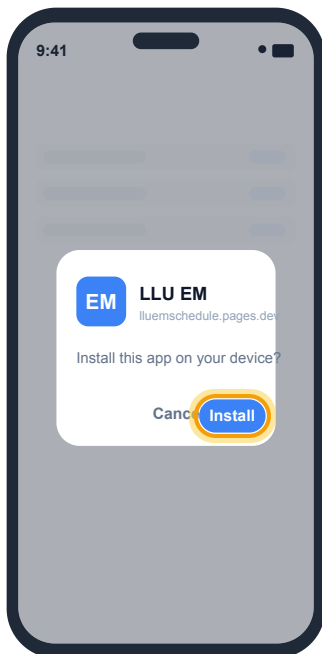
Type the link above into **Chrome**. When the schedule loads, tap the **:** menu in the top-right corner.



2

Tap “Install app”

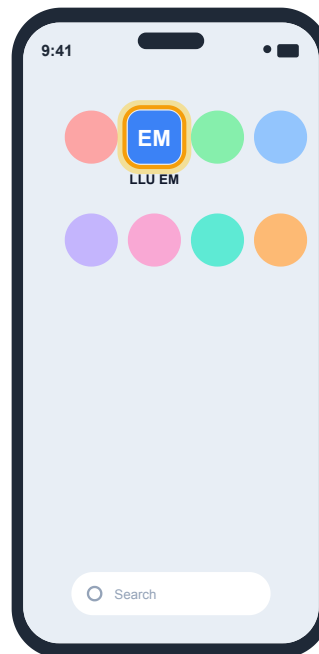
In the menu, tap **Install app** (on some phones it says **Add to Home screen**).



3

Tap “Install”

A small box appears. Tap **Install** to confirm.



4

Open it like an app

The **LLU EM** icon is now on your home screen / app drawer. Tap it to open — sign in once and you're set.

Don't see “Install app”? Make sure you're in **Chrome** (not Samsung Internet or an in-app browser) and that the page finished loading, then open the **:** menu again.